



# Cabinet Component System

Patented

Modular Masonry Technology at its Finest

## SA-WCS-NA

# Installation Instructions

**Please Read This Entire Document and Familiarize Yourself with All Steps and Kit Parts Before Beginning Construction of the Concrete Pad or the Cabinet Component System Kit.**

- **Materials required:** Landscape block adhesive or mortar.
- **Tools required:** Mallet or dead blow hammer, mason's or rock hammer, caulk gun, saw with masonry blade.
- **Finishing will require additional tools and materials based on the type of finish being applied.**

Notes: Panels may be trimmed with a masonry saw to fit out-of-square installations, or installations requiring smaller dimensions than those of the kit. Flexibility is a key design feature, and you are not limited to the configuration shown in this instruction - layouts may be modified or altered to different shapes as desired, however, it is not recommended that the depth be altered, as this would require alterations of the welded upper brackets.

Pre-installation Preparation: Islands should be installed on a 4" steel-reinforced concrete pad or patio. Pier pad below frost line if required in your region. Construct the pad with an appropriate outside border, to serve as a support ledge for finish material, if required by the type of finish to be used.

Before beginning construction, draw the footprint of the kit on the pad or patio (chalk line recommended), to visualize the layout.

Do not remove the foam shipping form in the front panel opening until the panel is in place. Remove by sawing out rather than knocking out, as the opening is susceptible to damage until the finish material has been applied.

Refer to Figure 1 for the number and layout of the wall panels, and Figure 2 for the types of brackets used in this island kit. Unfinished Dimensions of this model is 36" wide by 30" deep by 36" tall.

Figure 1

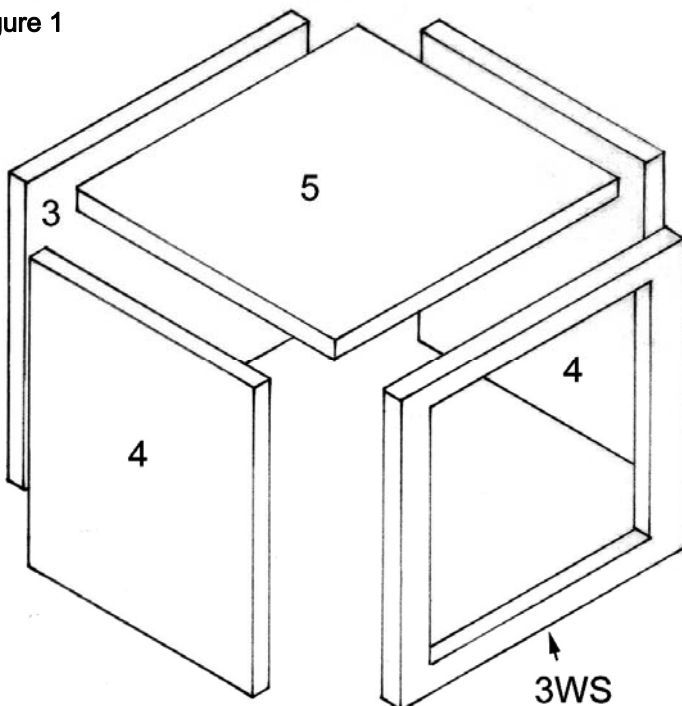


Figure 2

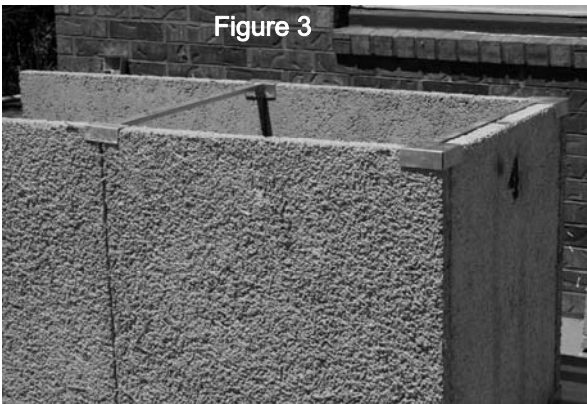
Brackets - New Age Wood Storage Models

BR90CDWNA Corner Double Weld - New Age



BR90CS Corner Single

1. Place one 90° corner single bracket on the pad at one of the front corners of the box on the end where you want to start. Lower brackets may be glued into place if desired.
2. Place panels with rough side out when possible. Set a #3 back panel into the bracket. Place a #4 end panel into the bracket inside the #3 back panel, noting. Apply adhesive between #3 and #4 panels. Repeat process on front corner with second #3 or appropriate front panel if model has an open front.
3. Place a 90° corner double weld end bracket at the top joint of the #3 and #4 panels (refer to Figure 3). NOTE: The welded brackets are intended to be used on the top, with the angle iron joining them providing extra support for the top panels.
4. Once brackets are in place, place top panel using adhesive. Kit assembly is now complete.
5. Exterior may be finished with thin stone, full veneer stone, fabricated stone, brick, stucco, tile, granite, or any other material compatible with masonry or concrete.
6. Accessories or other items may set in place without positive attachment, or may be attached to the units using a masonry drill bit and masonry anchors or Tapcons. When using an anchor or Tapcon, it is recommended that a pilot hole be drilled before attaching the anchor. When anchoring into the edge of a panel, drill the pilot hole at the center of the panel for best results.



### **Finishing Specifications**

**Model SA-WCS-NA:** Side Area: 28 Square Feet, Top Area: 9 Square Feet, Corners: 12 Linear Feet

SA-WCS-NA V0213