

SA-30/60/90/120/150/180 RDS-WT/WOT Section Kits

Installation Instructions

Please Read This Entire Document and Familiarize Yourself with All Steps and Kit Parts Before Beginning Construction of the Concrete Pad or the Cabinet Component System Kit.

- **Materials required:** Landscape block adhesive or mortar.
- **Tools required:** Mallet or dead blow hammer, mason's or rock hammer, caulk gun, saw with masonry blade.
- **Finishing will require additional tools and materials based on the type of finish being applied.**

Notes: Panels may be trimmed with a masonry saw to fit out-of-square installations, or installations requiring smaller dimensions than those of the kit. Flexibility is a key design feature, and you are not limited to the configuration shown in this instruction - layouts may be modified or altered to different shapes as desired, however, it is not recommended that the depth be altered, as this would require alterations of the welded upper brackets.

Pre-installation Preparation: Islands should be installed on a 4" steel-reinforced concrete pad or patio. Pier pad below frost line if required in your region. Construct the pad with an appropriate outside border, to serve as a support ledge for finish material, if required by the type of finish to be used.

Before beginning construction, draw the footprint of the kit on the pad or patio (chalk line recommended), to visualize the layout.

Refer to Figure 1 for the layout of the kit, and Figure 2 for the types of brackets used in this island kit. Unfinished Dimensions of this model are 36" wide (outside), 18" wide (inside) by 33" deep by 36" tall (with top), or 34" tall (without top), per section kit. Multiple kits will increase the width dimensions by 36" and 18" per added section.

Figure 1
Layout & Part Numbers

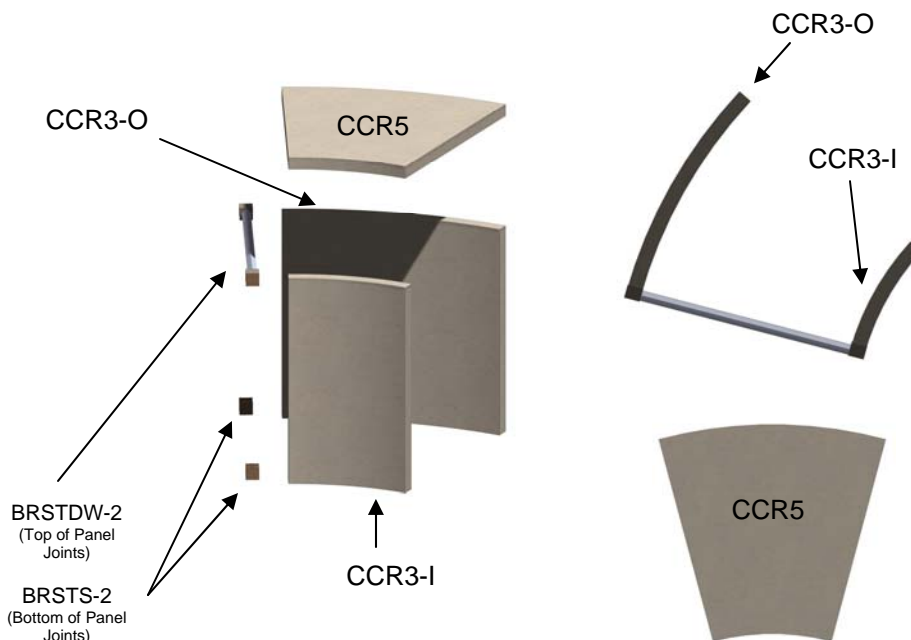


Figure 2
Brackets
Radiused Islands



1. Begin construction of the Radiused Island Section kit by placing the lower single brackets (BRSTS-2) on the pad at the chosen starting point of the Radiused Section (typically at the end of a length of straight island kit - refer to that kit's instructions for its assembly details), with the narrower wall panel (CCR3-I) on the inside of the layout and the larger wall panel (CCR3-O) on the outside. Lower brackets may be glued into place if desired. Refer to Figures 3 & 4.
2. Place a straight double weld bracket (BRSTDW-2) at the top joint of the #3 panels at each joint line, joining the inner and outer panels of each section. NOTE: The welded brackets are intended to be used on the top, with the angle iron joining them providing extra support for the top panels. Refer to Figure 4.
3. When assembling multiple Radiused Island Section kits, repeat Steps 1 and 2 for each Radiused Island Section kit. Refer to Figure 6.
4. Once brackets are in place, place top panel(s) (CCR5, if your kit includes tops) using adhesive. Kit assembly is now complete.
5. Exterior may be finished with thin stone, full veneer stone, fabricated stone, brick, stucco, tile, granite, or any other material compatible with masonry or concrete.
6. Accessories or other items may set in place without positive attachment, or may be attached to the units using a masonry drill bit and masonry anchors or Tapcons. When using an anchor or Tapcon, it is recommended that a pilot hole be drilled before attaching the anchor. When anchoring into the edge of a panel, drill the pilot hole at the center of the panel for best results.

Figure 3

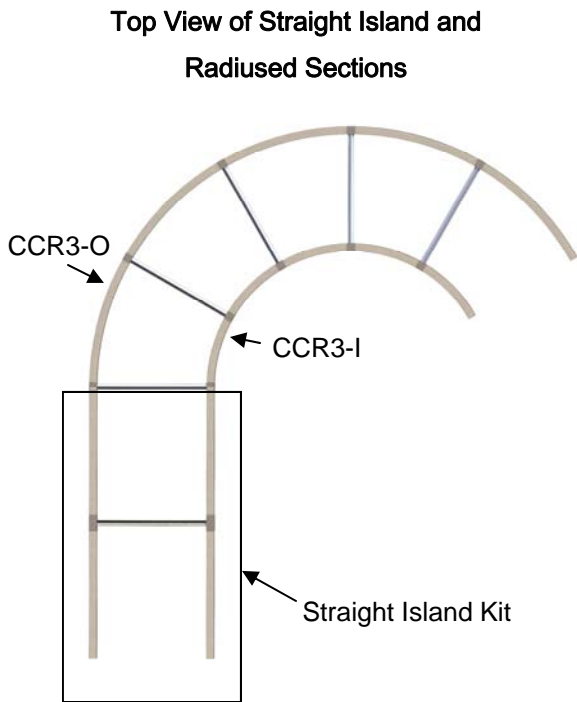


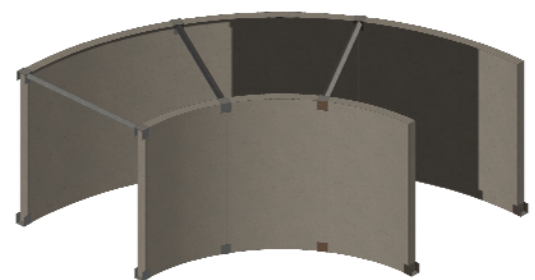
Figure 4

Single Radiused Section Kit



Figure 5

Multiple Radiused Section Kits



Kit Without Top



Kit With Top



Finishing Specifications

- Model SA30RDS:** Side Area: 26 Square Feet, Top Area: 9 Square Feet.
Model SA60RDS: Side Area: 51 Square Feet, Top Area: 17 Square Feet.
Model SA90RDS: Side Area: 69 Square Feet, Top Area: 25 Square Feet.
Model SA120RDS: Side Area: 87 Square Feet, Top Area: 33 Square Feet.
Model SA150RDS: Side Area: 105 Square Feet, Top Area: 42 Square Feet.
Model SA180RDS: Side Area: 123 Square Feet, Top Area: 50 Square Feet.